



BEVERAGE-AIR

PO Box 5932, Spartanburg, SC 29304
1-888-845-9800 Fax# 1-864-582-5083
<http://www.Beverage-Air.com>

Item No. _____
Quantity _____

ONE DOOR BOTTOM MOUNT GLASS DOOR MERCHANDISER FREEZER

MODELS:
CFG12

Commercial Refrigeration Equipment General Specification

ONE DOOR BOTTOM MOUNT— GLASS DOOR FREEZER

Single section glass door freezer used for merchandising and storage of frozen food and novelty items.

CABINET CONSTRUCTION

Heavy duty construction includes pre-painted steel interior and exterior. Choose from black or white exterior finish.

Eco-friendly polyurethane foam insulation enhances the structural strength of the cabinet and helps increase energy efficiency.

Swing triple heated glass pane door, aluminum frame, self-closing and magnetic gasket. Lock and insert handle standard.

Three plastic-coated wire shelves and baskets included.

Adjustable legs.

REFRIGERATION

Efficient forced-air refrigeration system. Programmable digital electronic control with adjustable temperature and automatic defrost cycle by hot gas. Finned condenser with cleaning fan. Hot gas condensate evaporator pan included.

Freezer product temperatures from -0.4°F to -11.2°F .

ELECTRICAL

Vertical interior lighting enhances product presentation.

Units wired at factory and ready for connection to a 115/60/1 phase, 15 amp dedicated outlet. 9' long cord and plug set included.

CFG12
(shown in
black exterior)



CFG12
(shown in
white exterior)



SPECIAL FEATURES

- Vertical interior lighting
- Adjustable legs



115/60/1
NEMA-5-15P

ELECTRICAL CONNECTION

Units pre-wired at factory and include 9' long cord and plug set.

Available From:



*Note: Not all markings may apply to all model variations.

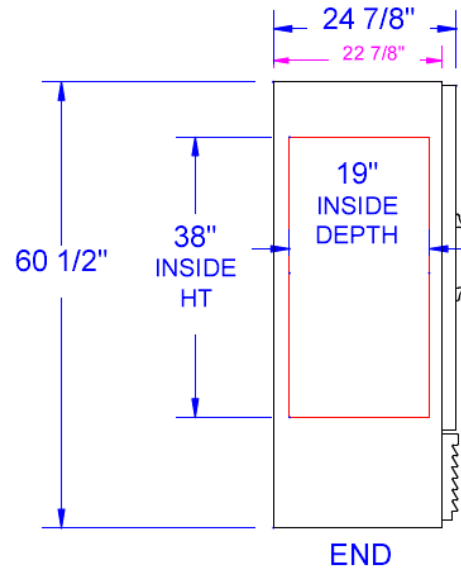
Model Specified _____	Store# _____
Location _____	Quantity _____



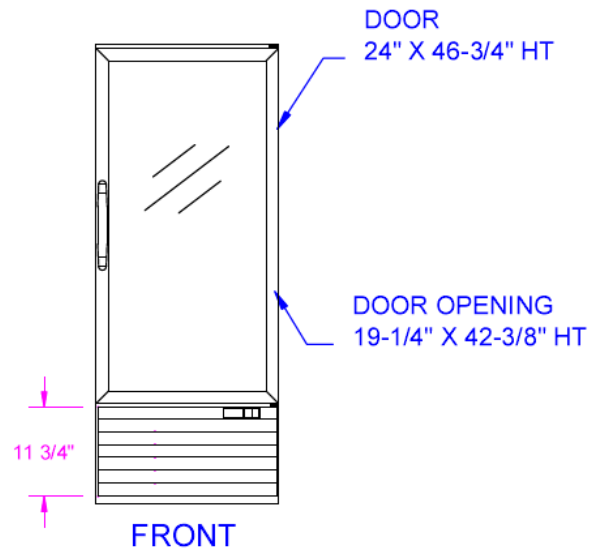
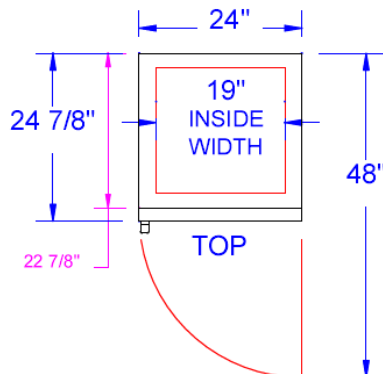
One Door, Bottom Mount Glass Door Freezer
Model: CFG12

MODEL	CFG12
EXTERNAL DIMENSIONAL DATA	
Length Overall (inches) Length Overall (mm)	24" 610
Depth Overall (inches) Depth Overall (mm)	24 7/8" 632
Height Overall— (inches) Height Overall— (mm)	60 1/2" 1537
Number of doors	1
Depth with Door Open 90 °	48"
INTERNAL DIMENSIONAL DATA	
NET Capacity (cubic ft.) NET Capacity (Liters)	10.1 286
Internal Length Overall (inches) Internal Length Overall (mm)	19" 483
Internal Depth Overall (inches) Internal Depth Overall (mm)	19" 483
Internal Height Overall—(inches) Internal Height Overall—(mm)	38" 965
Number of shelves	3
ELECTRICAL DATA	
Full Load Amperes 115/60/1	10
ENERGY CONSUMPTION (KWH)	
	13
REFRIGERATION DATA	
Horsepower	1/2
WEIGHT DATA	
Gross Weight (Crated lbs)	250
Gross Weight (Crated kg)	113

PLAN VIEWS



Note: Not all markings may apply to all model variations.



BEVERAGE-AIR® CORPORATION

700 Buffington Road • PO Box 5932 • Spartanburg, SC 29304 USA • (864) 582-8111 • Fax (864) 582-5083 • (888) 845-9800 • www.beverage-air.com

Specifications are subject to change without prior notice. 03/09