



## COUNTER MODEL ACHIEVER HOT PLATE

**WOLF RANGE COMPANY**

**BASIC MODELS:**

<b>AHP212</b> 12" wide	<b>AHP424</b> 24" wide
<b>AHP636</b> 36" wide	<b>AHP848</b> 48" wide



**Model AHP424**

**KEY FEATURES:**

- Stainless steel sides and control panel
- Full width pull out crumb tray
- Heavy duty cast iron top grates
- 30,000 BTU/hr open burners with lift-off heads
- Standing pilot ignition system
- One infinite heat control valve for each burner
- 6" adjustable legs
- 3/4" rear gas connection and gas pressure regulator

**OPTIONAL FEATURES:**

- Step-up burners. Rear burners elevated 4".
- Half hot-top on rear burner, 15,000 BTU/hr input.
- 7-5/8", 10", 12" and 13" legs
- Stainless steel stand with undershelf and casters

**EXTERIOR DIMENSIONS:**

\_\_\_\_\_ " W x 33" D x 12-3/8" working height on 6" adjustable legs



CSA design certified. NSF listed.

Approved by \_\_\_\_\_

Date: \_\_\_\_\_

**SPECIFY TYPE OF GAS WHEN ORDERING.  
SPECIFY ALTITUDE WHEN ABOVE 2,000 FT.**

**WOLF RANGE COMPANY**

Wolf Range Company  
Division of ITW Food Equipment Group LLC  
(800) 366-9653  
[www.wolfrange.com](http://www.wolfrange.com)

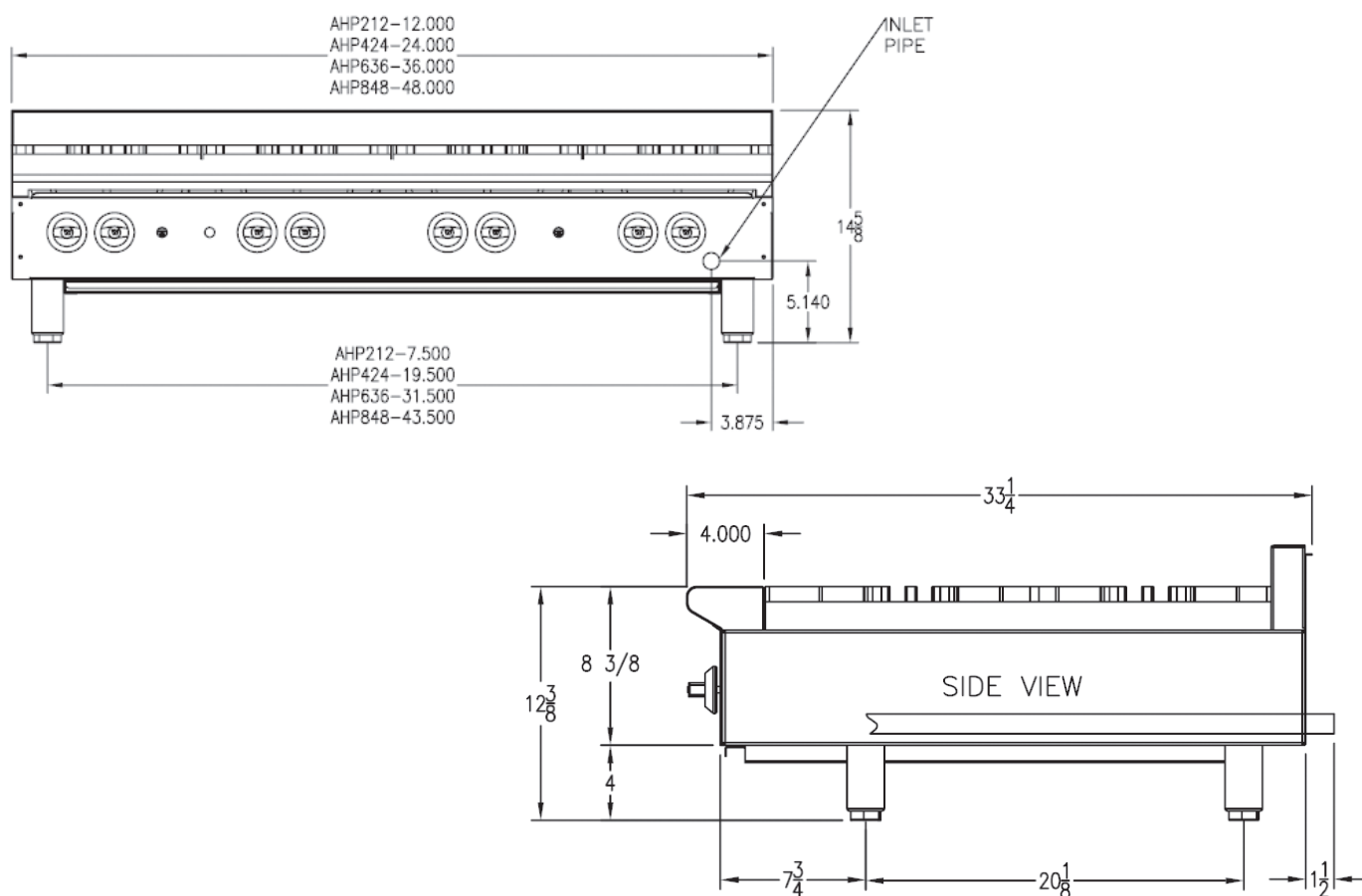
**MODEL: Counter Model Achiever Hot Plate**



## COUNTER MODEL ACHIEVER HOT PLATE

### INSTALLATION REQUIREMENTS:

1. A gas pressure regulator sized for this unit is included. Natural Gas 5.0" W.C. Propane Gas 10.0" W.C.
2. An adequate ventilation system is required for commercial cooking equipment. Information may be obtained by writing to the National Fire Protection Association, 1 Batterymarch Park, Quincy, MA 02269, [www.NFPA.org](http://www.NFPA.org). When writing refer to NFPA No. 96.
3. These units are manufactured for installation in accordance with National Fuel Gas Code, ANSI-Z223.1/NFPA #54 (latest edition). This shall include but not be limited to: NFPA #54 Section 10.3.5.2 for Venting. Copies may be obtained from The American Gas Association Accredited Standards Committee Z223, @ 400 N. Capital St. NW, Washington, DC 20001 or the Secretary Standards Council, NFPA, 1 Batterymarch Park Quincy, MA 02169-7471
4. This appliance must be installed with a 6" clearance at both sides and the rear adjacent to combustible construction.



MODEL	WIDTH	DEPTH	OVERALL HEIGHT	WORKING HEIGHT	NO. OF BURNERS	TOTAL BTU/HR.	APPROX. SHIP WT. (LB/KG)
AHP212	12"	33"	14-5/8"	12-3/8"	2	60,000	95 lbs./43 kg
AHP424	24"				4	120,000	165 lbs./74 kg
AHP636	36"				6	180,000	265 lbs./119 kg
AHP848	48"				8	240,000	3100 lbs./140 kg

**NOTE:** In line with its policy to continually improve its product, Wolf Range Company reserves the right to change materials and specifications without notice.  
This appliance is manufactured for commercial use only and is not intended for home use.